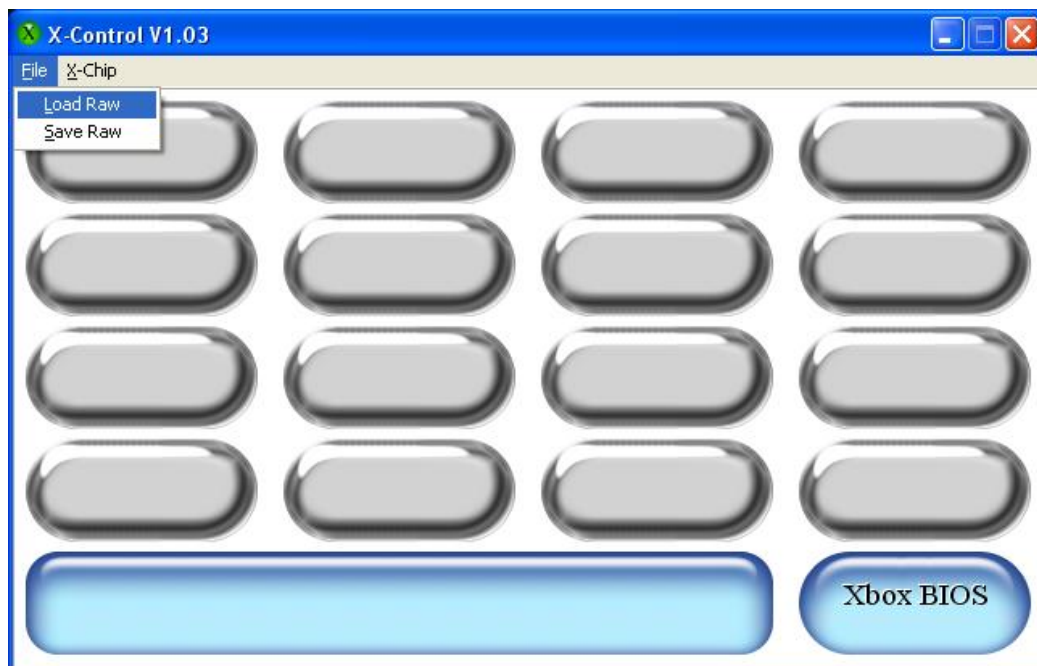


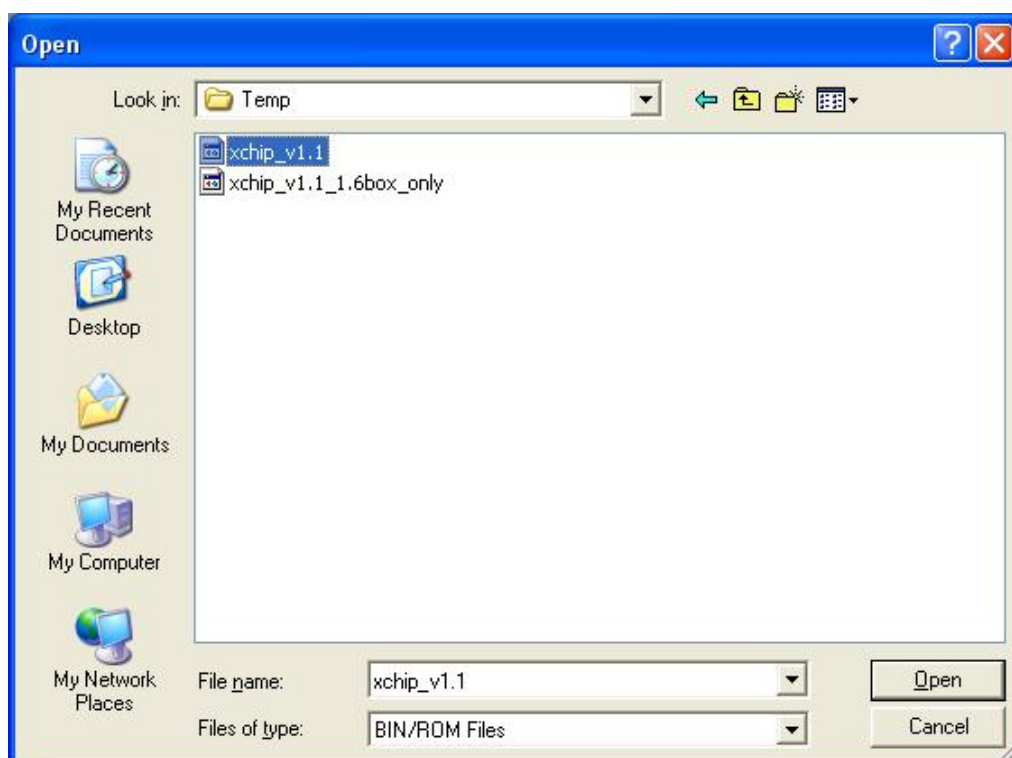
Installation

In order to install the EvoX X-Chip OS, you need to use the X-Control tool supplied with your X-Chip. Your USB cable must be connected, and the small X in the menu bar must be green. If not, consult the X-Chip user manual. The XBOX can be on or off, it doesn't matter.

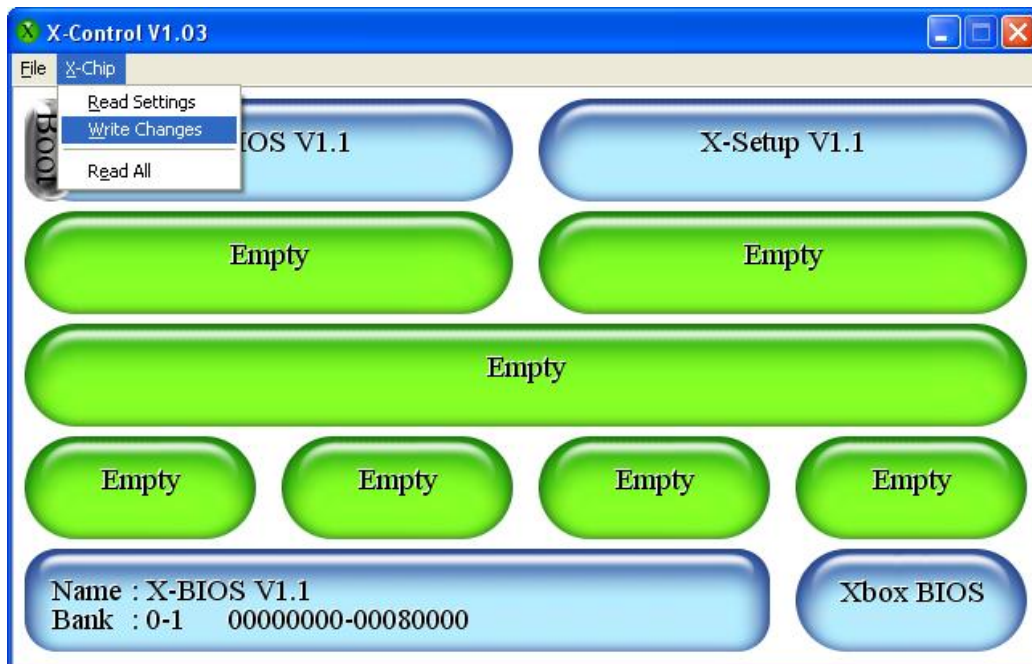
- 1) Choose "Load Raw" from the file menu.



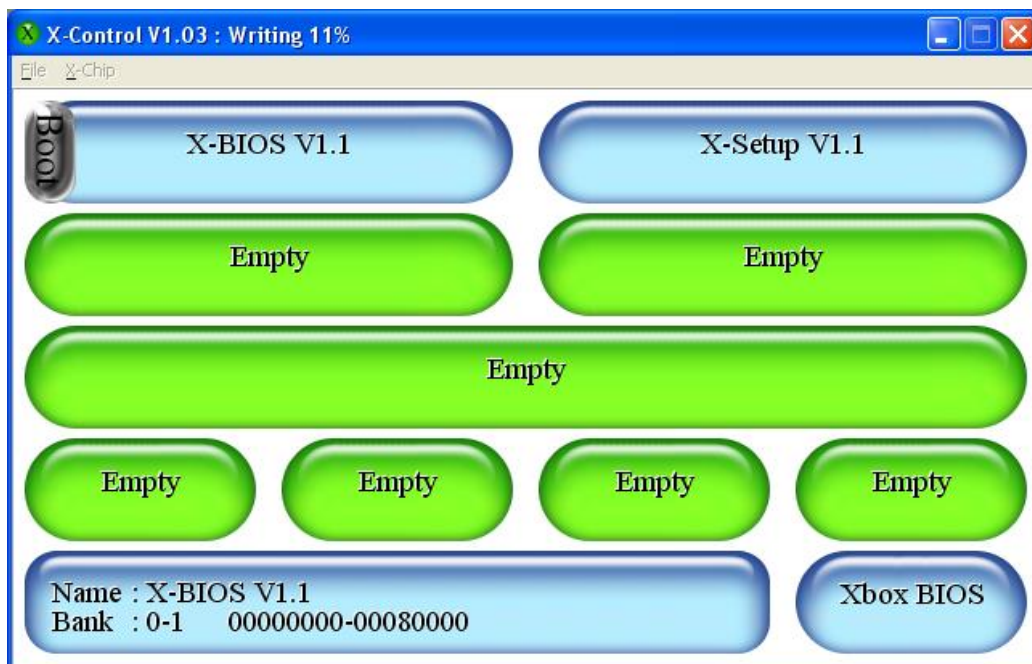
- 2) Select the ***xchip_v1.1.bin*** file if you have an XBOX version 1.0 to 1.5.
If you have a version 1.6 XBOX you need the ***xchip_v1.1_1.6box_only.bin*** file.



3) Choose “Write Changes” from the X-Chip menu.



4) Wait for the progress counter to finish.



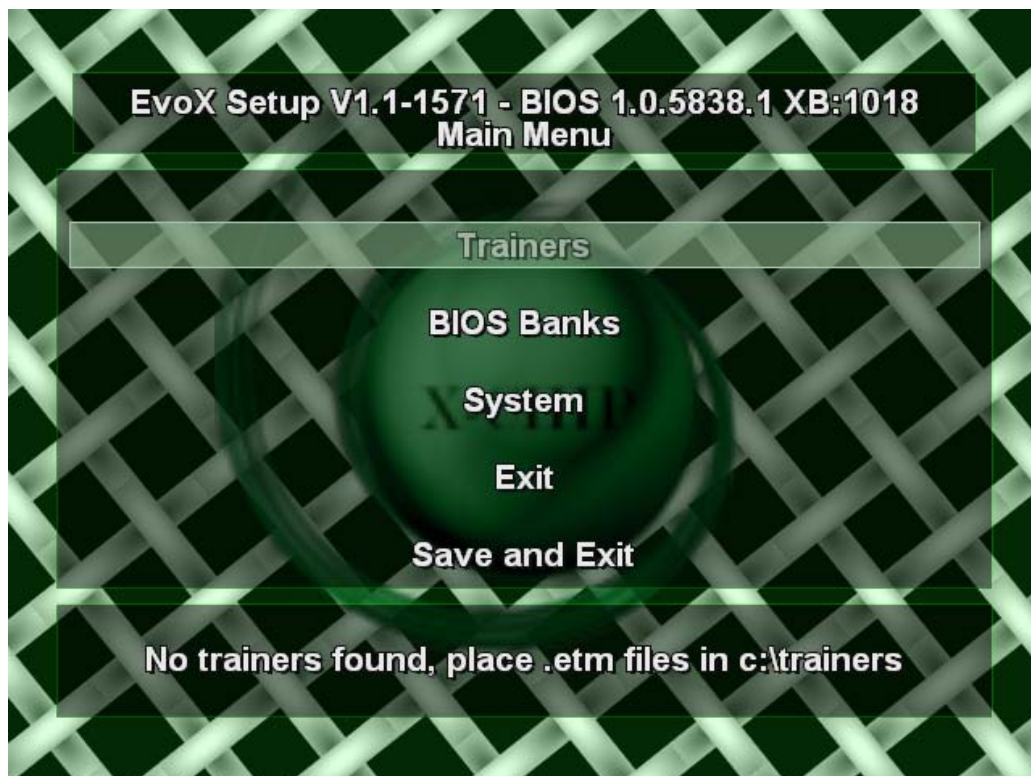
X-Chip OS

After finishing the OS upgrade, you need to reboot your XBOX.

When you boot X-Chip OS, you will notice a purple EvoX logo, and a green X-Chip logo on the boot animation screen.

Press the “Start” button on your controller to enter the X-Chip Setup menu.

This is the main screen you will see when entering the setup.



In the next sections the various features will be explained briefly.

BIOS Banks

BIOS Banks mainscreen.



The X-Chip BIOS banks can be broken into 5 major sections:

- 1) Original XBOX BIOS
This is the onboard “TSOP” BIOS on your XBOX motherboard, it cannot be altered from within X-Chip OS.
- 2) X-BIOS, and X-Setup (Blue Section)
This is the X-Chip OS data, this section is reserved and cannot be used for flashing other BIOS's.
- 3) First 1024KB, currently divided into 2x512KB blocks. This can be changed to 1x1024, 2x512, 1x512+2x256 or 4x256, and can be flashed with any bios you prefer.
- 4) Second 1024KB, currently 1x1024KB block. This can be changed to 1x1024, 2x512, 1x512+2x256 or 4x256, and can be flashed with any bios you prefer.
- 5) Third 1024KB, currently divided into 4x256KB blocks. This can be changed to 1x1024, 2x512, 1x512+2x256 or 4x256, and can be flashed with any bios you prefer.

Any of the above banks (except X-Setup which is not a BIOS) can be booted immediately by pressing the “Start” button.

Original XBOX BIOS

Original XBOX BIOS cannot be altered; however you can assign a button to boot this BIOS.

When the assigned button is pressed during power up, it will boot the onboard (original) XBOX BIOS.



You can also set it to boot default (every time the XBOX is powered on), or boot by pressing the Eject button.

If you at anytime wish to boot the X-Chip OS again, it can be done by pressing an assigned button, or by holding down the “safe mode button” on the small USB adapter while powering on the XBOX.

Booting XBOX Original BIOS, will disable the X-Chip (for XBOX Live Compatibility).

Booting by pressing the Eject button should not be used with XBOX Original BIOS if you have a version 1.0 XBOX.

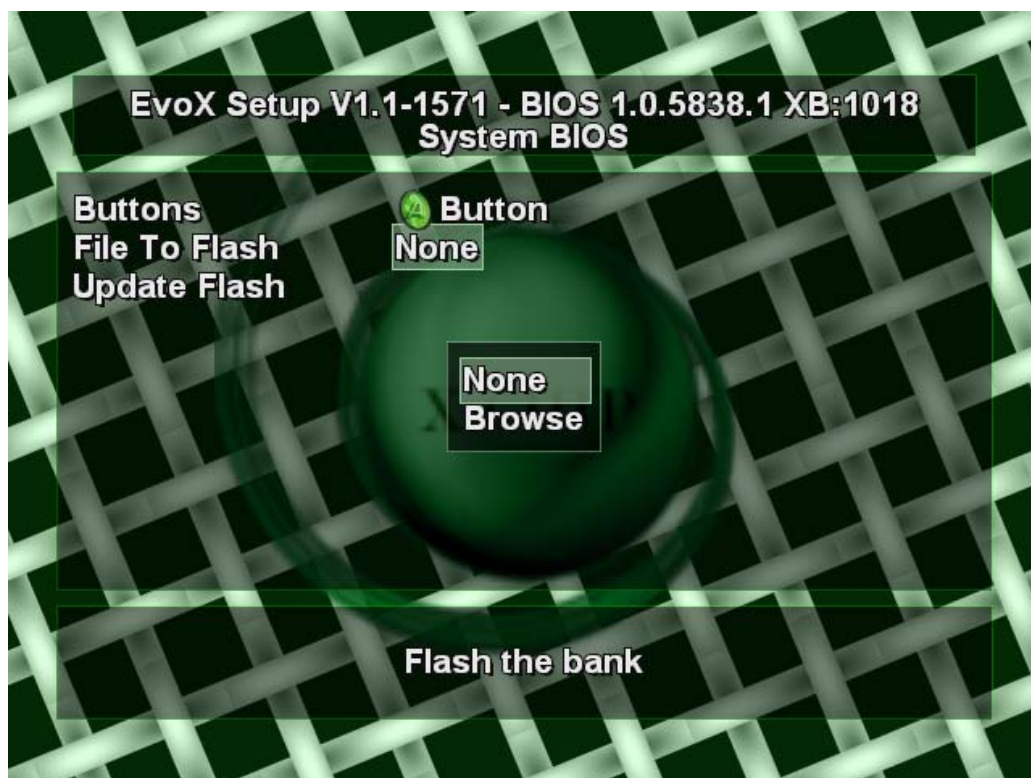
X-BIOS, and X-Setup (Blue Section)

X-Setup is a protected bank containing data necessary for the X-Chip OS, this bank cannot be modified.

Selecting the X-BIOS bank, will allow you to assign a button, or update the X-Chip OS.

You can choose the “File to Flash” menu, and browse for a 4MB X-Chip OS flash file e.g. *xchip_v1.1.bin*.

You will only be able to select files from hard disk drive (C,E) or from DVD (D) that are actually 4MB.



3x1024KB User banks

For every user bank you select, you will have the following options:



You can assign a button as previously described.

You can alter the size of the selected bank.

If you choose to increase the size of a bank, you will delete any contents of the other banks within the 1024KB block, if there is a conflict.

The bank size will not change before you select the “Update Flash” option.

You can browse for any BIOS file and flash to the selected bank.

BIOS resizing is automatic, so if you load a 256K BIOS to a 512K bank, it will automatically be duplicated.

Finally you also have the option to erase the selected bank.

System Menu

Selecting the System Menu option will give you the following options.



Standard EEPROM



Standard EEPROM settings will allow you to modify the default settings of your XBOX EEPROM.

Advanced BIOS Features



- **IGR (In Game Reset)**
3 different options are available for IGR
 - Disable
 - Soft (Quick but less compatible)
 - Hard (Slow but more compatible)

If Hard or Soft is selected, the In Game Reset function can be activated by pressing the buttons **Back + Start + Left Trigger + Right Trigger** simultaneously.

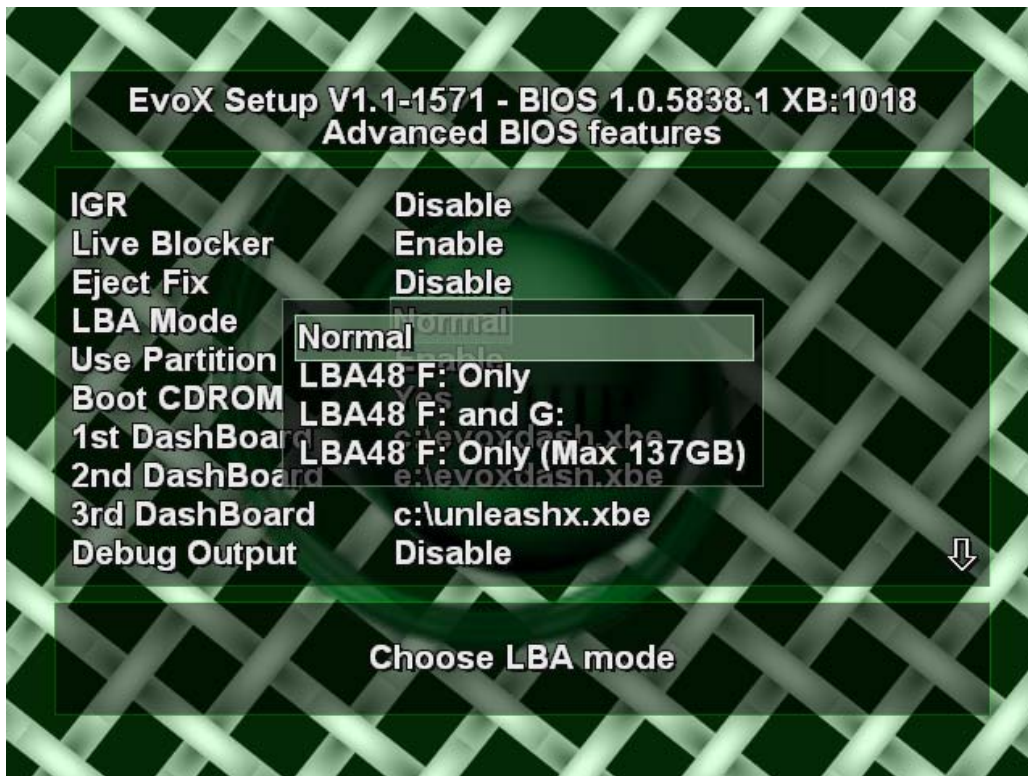
Or by pressing **Back + Black + Left Trigger + Right Trigger** (for small controller compatibility).

- **Live Blocker**
If Live Blocker is enabled, it will prevent games and / or Microsoft dashboard from accessing the XBOX Live Service.

Accessing XBOX live Service with X-Chip enabled will get your XBOX banned from future access.

- **Eject Fix (Reset on Eject Fix)**
Normally the XBOX will reset when you press the Eject Button, enabling the Eject Fix will prevent the XBOX from resetting.

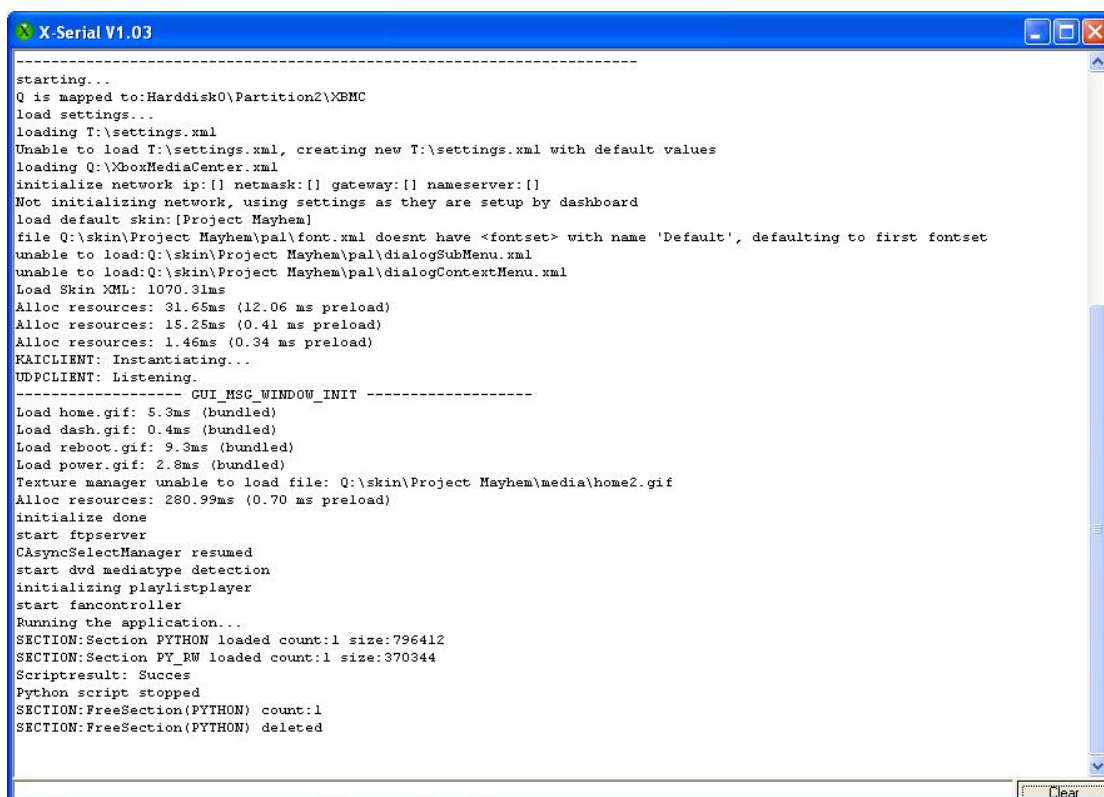
- **LBA Mode**
4 different modes are available.



- **Normal**
This is the same mode as XBOX normally comes with. This is selected as default mode, and you will not be able to use F or G partitions.
- **LBA48 F: Only (Partition 6 takes rest of drive)**
LBA48 mode with support for hard disks larger than 137GB, you will only have one extended partition (F).
- **LBA48 F: and G: (Partition 6 takes up to 137G, Partition 7 takes rest of drive)**
LBA48 mode with support for hard disks larger than 137GB, you will have 2 extended partitions (F) and (G).
This mode is also compatible with older BIOS's that do not support LBA48, however you will only be able to see data on F partition.
- **LBA48 F: Only (Max 137GB)**
This is the "old" large drive support made by Evox, you will only be able to use the first 137GB of your hard disk, even if it's bigger.

Warning: For those moving from a non-LBA48 BIOS, if your drive is greater than 137GB and you already have a partition 6 which goes up to the 137GB barrier then choosing the partitioning option "LBA48 F: Only" will result in data corruption when the drive is written to. You'll need to reformat the drive if you want to resize your partition 6 to use all available space. (thx nightshd)

- **Partition Table**
Enable will use the hard drive partition table (default)
Disable will will cause the kernel partition table to override the hard drive table.
- **Boot CDROM**
Select yes if you want to be able to Boot from CD/DVD.
- **1st, 2nd, 3rd Dashboard**
Select which dashboards the BIOS will look for when booting.
- **Debug Output**
This feature will enable a virtual COM port, and allow debugging over USB using the DbgPrint(“”); function from the SDK.



```

X-Serial V1.03
-----
starting...
Q is mapped to:Harddisk0\Partition2\XBM
load settings...
loading T:\settings.xml
Unable to load T:\settings.xml, creating new T:\settings.xml with default values
loading Q:\XboxMediaCenter.xml
initialize network ip:[] netmask:[] gateway:[] nameserver:[]
Not initializing network, using settings as they are setup by dashboard
load default skin:[Project Mayhem]
file Q:\skin\Project Mayhem\pal\font.xml doesnt have <fontset> with name 'Default', defaulting to first fontset
unable to load:Q:\skin\Project Mayhem\pal\dialogSubMenu.xml
unable to load:Q:\skin\Project Mayhem\pal\dialogContextMenu.xml
Load Skin XML: 1070.31ms
Alloc resources: 31.65ms (12.06 ms preload)
Alloc resources: 15.25ms (0.41 ms preload)
Alloc resources: 1.46ms (0.34 ms preload)
FAICLIENT: Instantiating...
UDPCCLIENT: Listening.
----- GUI_MSG_WINDOW_INIT -----
Load home.gif: 5.3ms (bundled)
Load dash.gif: 0.4ms (bundled)
Load reboot.gif: 9.3ms (bundled)
Load power.gif: 2.8ms (bundled)
Texture manager unable to load file: Q:\skin\Project Mayhem\media\home2.gif
Alloc resources: 280.99ms (0.70 ms preload)
initialize done
start ftpserver
CAsyncSelectManager resumed
start dvd mediatype detection
initializing playlistplayer
start fancontroller
Running the application...
SECTION:Section PYTHON loaded count:1 size:796412
SECTION:Section PY_RW loaded count:1 size:370344
Scriptresult: Success
Python script stopped
SECTION:FreeSection(PYTHON) count:1
SECTION:FreeSection(PYTHON) deleted
  
```

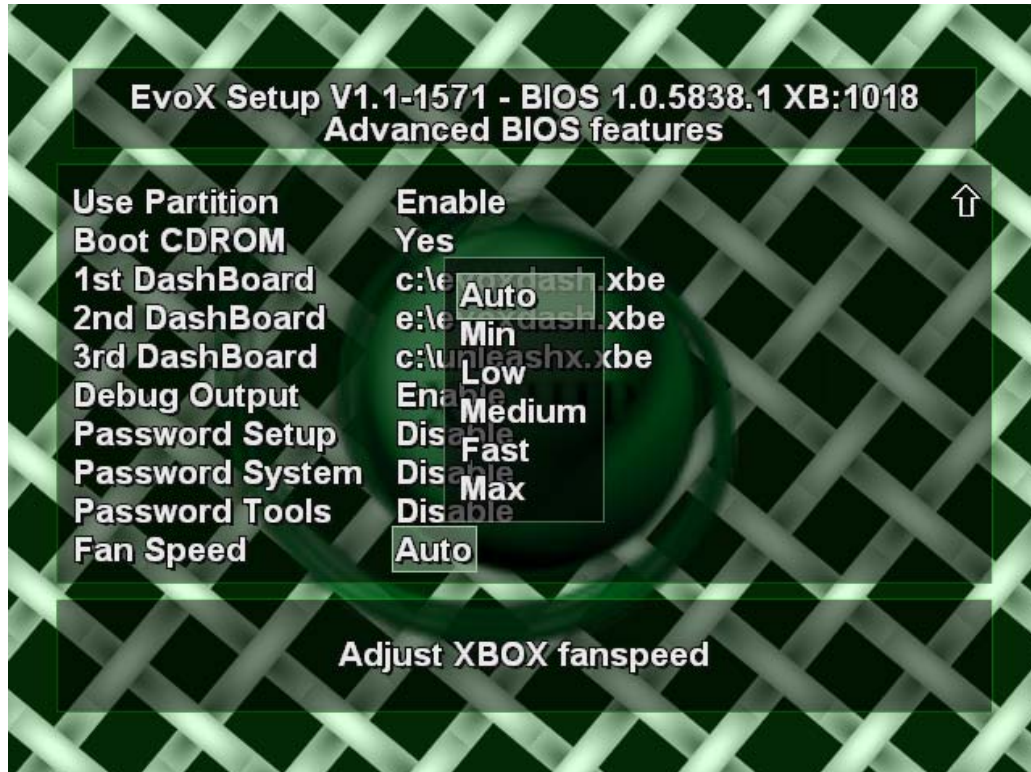
Sample screenshot of XBOX Media Center starting with USB debug enabled.

- **Password Setup**
Enable password protection on Setup menu.
- **Password System**
Enable password protection on System menu.
- **Password Tools**
Enable password protection on Tools menu.

- **Fan Speed**

Control XBOX fan speed (Auto, Min, Low, Medium, Fast, Max)

Auto is default setting, and will adjust fan speed depending on the temperature inside your XBOX.



Visual Menu

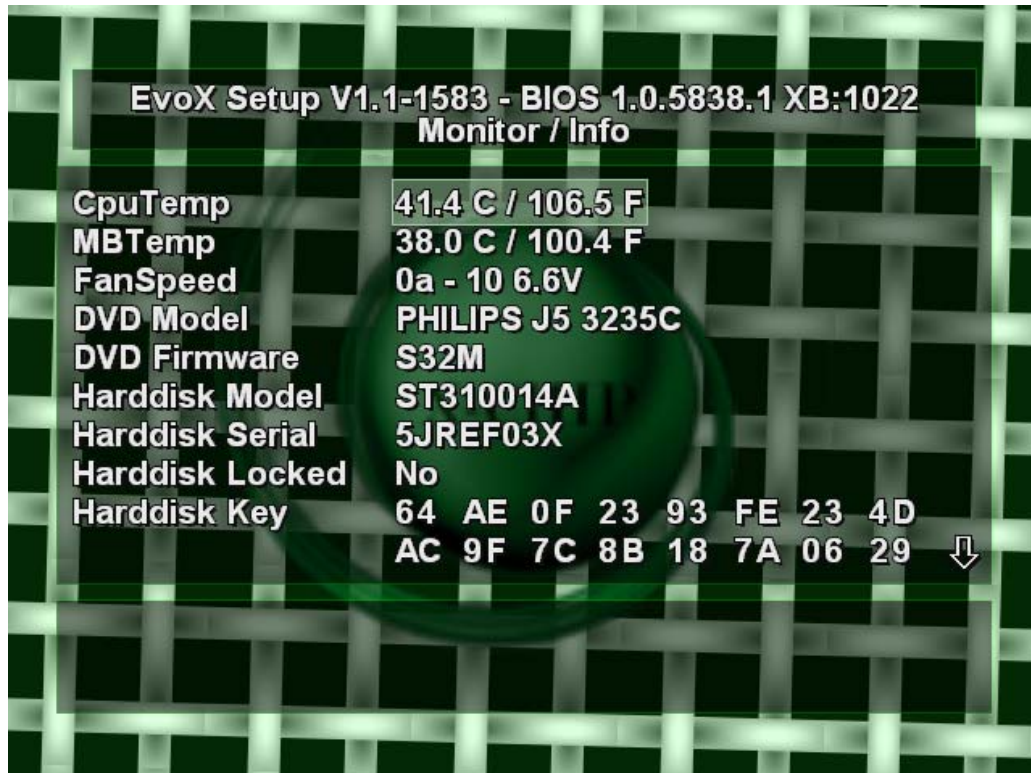
From this menu you will be able to adjust visual aspects of the X-Chip OS.



- **Evox Logo**
Turn on / off the Purple Evox logo shown on the startup boot animation.
- **X-Chip Logo**
Turn on / off the X-Chip logo shown on the startup boot animation.
- **Setup Text**
Remove the text “Press Start to enter Setup” shown on the startup boot animation.
- **Setup Skin**
Choose the texture of the rotating background.
- **Setup Logo**
Turn on / off the centered logo in X-Chip OS.
- **Rotating**
Choose speed and direction of the rotating background.

Monitor / Info

From this menu you can view various data on your XBOX, e.g. (Temperatures, Fanspeed, DVD Info, Harddisk Info, Serial Number, Ethernet Address, AV Pack).



Tools

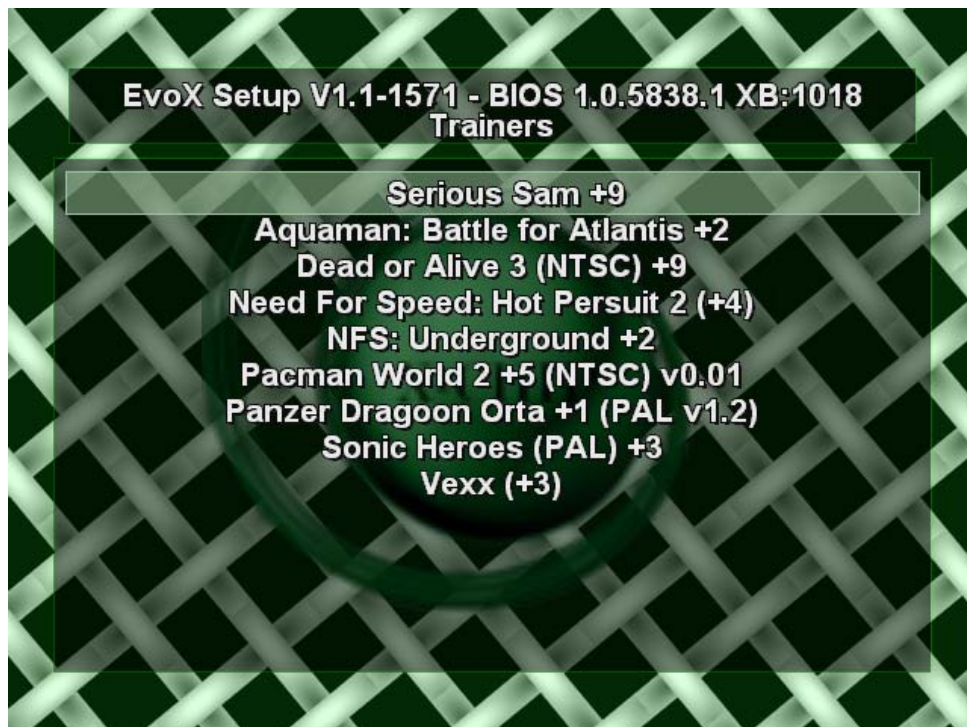
From the tools menu you are able to backup / recover your EEPROM, and lock / unlock your harddisk.



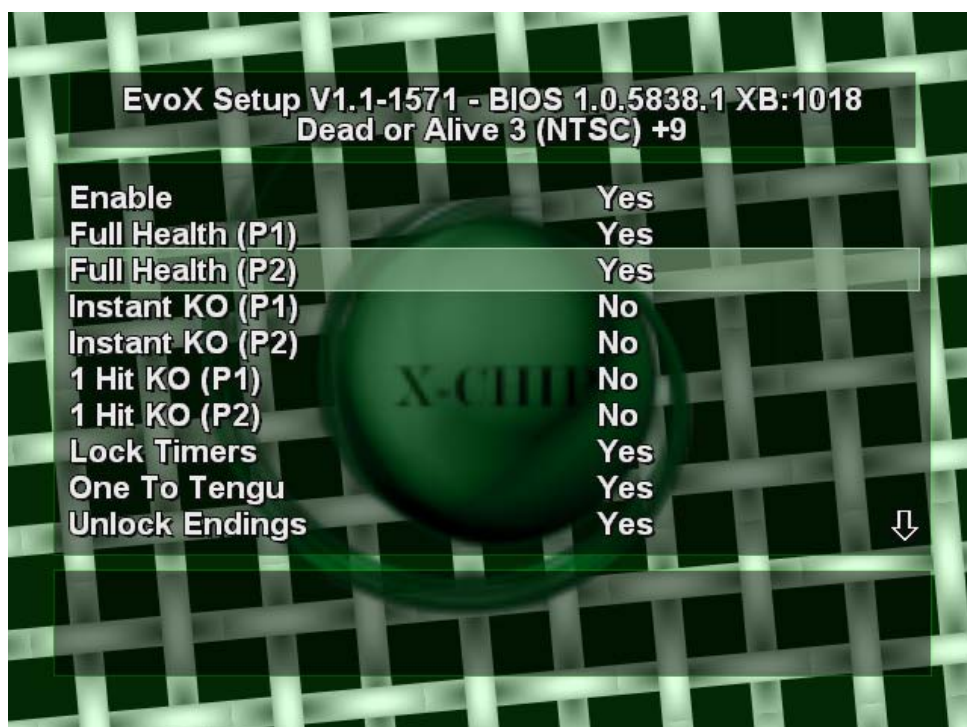
Trainers

Trainers menu will enable the use of EvoX Trainer Modules (ETM files)
Trainers will let you cheat in games.

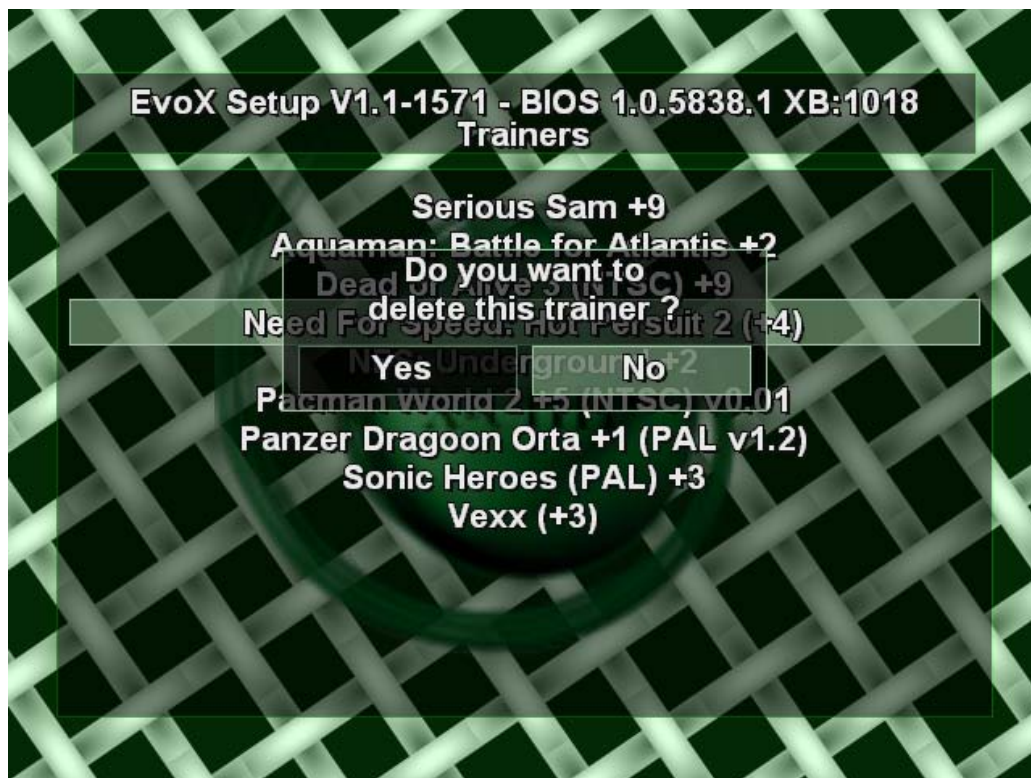
If you have not downloaded any ETM files, the Trainer menu will not be selectable.
You need to download ETM files and place them on the C drive (C:\Trainers).



Configure individual trainers by selecting them (A) button.



If you wish to remove any of the Trainers, it can be done by pressing the yellow (Y) button.



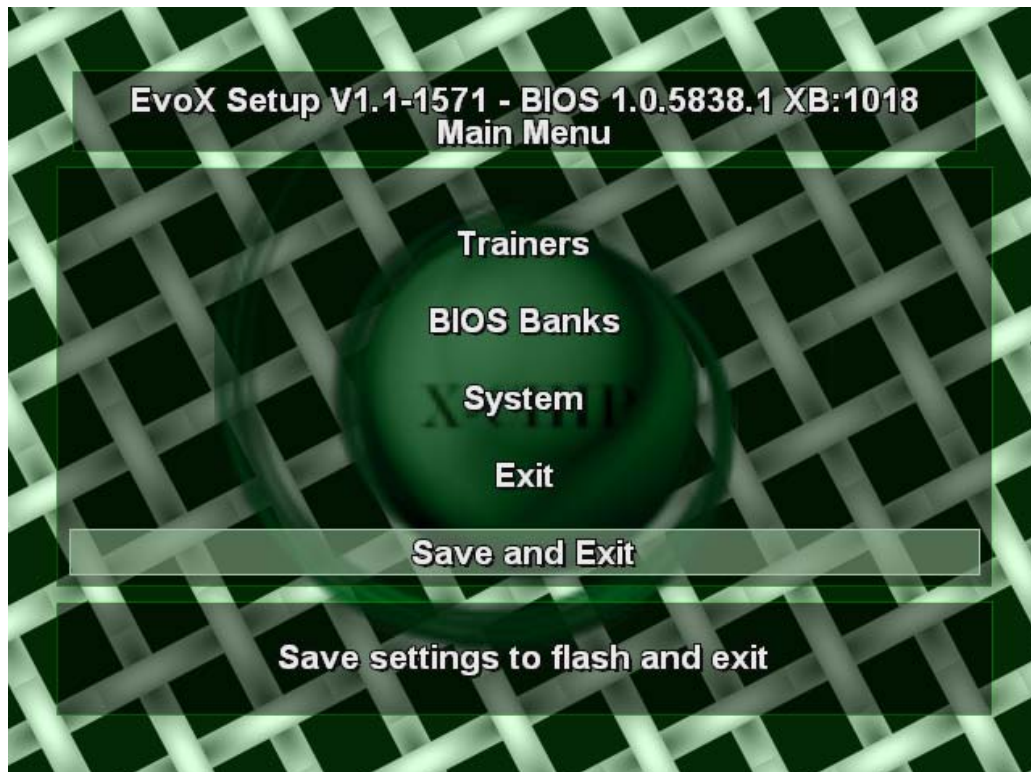
Get your Trainers form here <http://trainers.evolutionx.info/index.php>

Save and Exit

When you have finished configuring the X-Chip OS, choose the Save and Exit function from the Main menu.

If you do not wish to keep any changes just use the Exit function.

You can also use the quick exit function from within any menu by pressing the white button on your XBOX controller. No settings will be saved this way!



Useful Links

<http://www.evolutionx.info/>
<http://www.help-forums.com>
<http://forums.xbox-scene.com/index.php>
<http://www.xbox-scene.com/>
<http://trainers.evolutionx.info/index.php>
<http://www.xboxinfocenter.com/>

Enjoy your new X-Chip OS ;)

Team Evox